

# Air Conditioning

## Product Information

**SEZ-KD50VAQ** (Single Phase)  
**Inverter Heat Pump**  
Ceiling Concealed Ducted System

Making a  
World of  
Difference

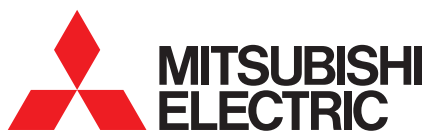
Mr.SLIM™



Designed for offices, restaurants and shops, the SEZ-KD series operates at low noise levels. Its low unit height and lightweight design also help to make installation easier and more convenient.

### Key Features

- Optimised Rotary or Scroll Compressor
- Inverter Control - adjusts performance to economically match the demand for heating or cooling
- Auto-Restart
- Quiet Operation
- Auto-Changeover
- Hot Start - draught prevention
- Low Unit Height - minimal intrusion into occupied space
- Double Thermostat Function - control the temp via a sensor in the controller or the unit (wired remote controllers only) replace technology available



Air Conditioning | Heating  
Ventilation | Controls

# Air Conditioning

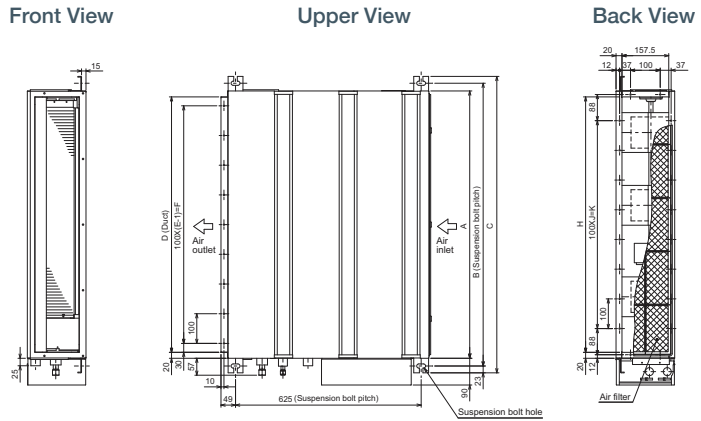
## Product Information

**SEZ-KD50VAQ** (Single Phase)  
**Inverter Heat Pump**  
 Ceiling Concealed Ducted System

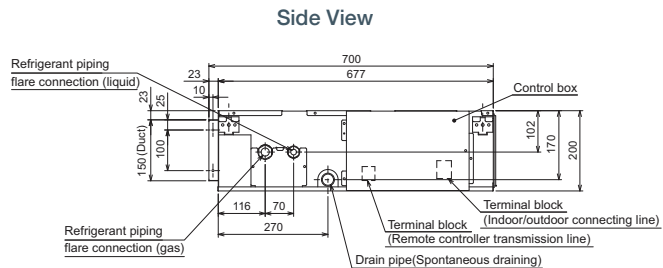
Making a  
 World of  
 Difference

SEZ-KD-VAQ - INDOOR UNITS		SEZ-KD50VAQ
CAPACITY (kW)	Heating (nominal)	6.4 (1.7-7.2)
	Cooling (nominal)	5.1 (2.3-5.6)
	Heating (UK)	5.44 (1.45-6.12)
	Cooling (UK)	4.69 (2.12-5.15)
SHF (nominal & UK)		0.78
COP / EER (nominal)		3.56 / 3.23
SCOP / SEER (BS EN14825)		3.9 / 5.7
EP ENERGY EFFICIENCY CLASS Heating/Cooling		A / A+
AIRFLOW (l/s)	Lo-Mi-Hi	167-217-250
PIPE SIZE mm (in)	Gas	12.7 (1/2")
	Liquid	6.35 (1/4")
EXTERNAL STATIC PRESSURE (Pa)		5-15-35-50
SOUND PRESSURE LEVEL (dBA)	Lo-Mi-Hi	29-33-36
SOUND POWER LEVEL (dBA)		57
DIMENSIONS (mm) Width x Depth x Height		990 x 700 x 200
WEIGHT (kg)		23
ELECTRICAL SUPPLY		Fed by Outdoor Unit
FUSE RATING (BS88) - HRC (A)		6
INTERCONNECTING CABLE No. Cores		4

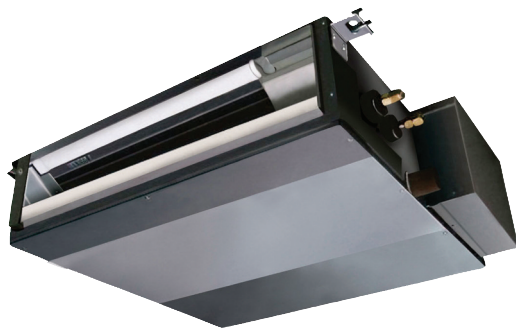
## DIMENSIONS



SUZ-KA-VA4 - OUTDOOR UNITS		SUZ-KA50VA4
SOUND PRESSURE LEVEL (dBA)	Heating/Cooling	52 / 52
SOUND POWER LEVEL (dBA)	Heating/Cooling	65
WEIGHT (kg)		54
DIMENSIONS (mm) Width x Depth x Height		840 x 330 x 880
ELECTRICAL SUPPLY		220-240V, 50Hz
PHASE		Single
SYSTEM POWER	Heating/Cooling (nominal)	1.80 / 1.58
INPUT (kW)	Heating/Cooling (UK)	1.60 / 1.34
STARTING CURRENT (A)		8.2
SYSTEM RUNNING CURRENT (A) Heating/Cooling [MAX]		7.40 / 8.20 [12.7]
FUSE RATING (BS88) - HRC (A)		20
MAINS CABLE No. Cores		3
MAX PIPE LENGTH (m)		30
MAX HEIGHT DIFFERENCE (m)		30
CHARGE R410A (kg) - 7m		1.60



Model	A	B	C	D	E	F	G	H	J	K	L
SEZ-KD50VAQ	900	952	998	860	9	800	1000	860	7	700	20



Telephone: 01707 282880

email: [air.conditioning@meuk.mee.com](mailto:air.conditioning@meuk.mee.com) web: [www.airconditioning.mitsubishielectric.co.uk](http://www.airconditioning.mitsubishielectric.co.uk)

UNITED KINGDOM Mitsubishi Electric Europe Living Environmental Systems Division  
 Travellers Lane, Hatfield, Hertfordshire, AL10 8XB, England General Enquiries Telephone: 01707 282880 Fax: 01707 278881

IRELAND Mitsubishi Electric Europe Westgate Business Park, Ballymount, Dublin 24, Ireland  
 Telephone: Dublin (01) 419 8800 Fax: Dublin (01) 419 8890 International code: (003531)

Country of origin: United Kingdom - Japan - Thailand - Malaysia. ©Mitsubishi Electric Europe 2015. Mitsubishi and Mitsubishi Electric are trademarks of Mitsubishi Electric Europe B.V. The company reserves the right to make any variation in technical specification to the equipment described, or to withdraw or replace products without prior notification or public announcement. Mitsubishi Electric is constantly developing and improving its products. All descriptions, illustrations, drawings and specifications in this publication present only general particulars and shall not form part of any contract. All goods are supplied subject to the Company's General Conditions of Sale, a copy of which is available on request. Third-party product and brand names may be trademarks or registered trademarks of their respective owners.



Note: The fuse rating is for guidance only. Please refer to the relevant databook for detailed specification. It is the responsibility of a qualified electrician/electrical engineer to select the correct cable size and fuse rating based on current regulation and site specific conditions. Mitsubishi Electric's air conditioning and heat pump systems contain fluorinated greenhouse gases R410A, R407C and R134a.



[www.greengateway.mitsubishielectric.co.uk](http://www.greengateway.mitsubishielectric.co.uk)

Mitsubishi Electric UK's commitment to the environment

Follow us @meuk\_Jes  
 Follow us @green\_gateway

Mitsubishi Electric  
 Living Environmental Systems UK

mitsubishielectric2

Effective as of April 2015