

Series COOLING ONLY PE-5,6,8,10,12,16,20GAK

50
Hz



Fixed Speed



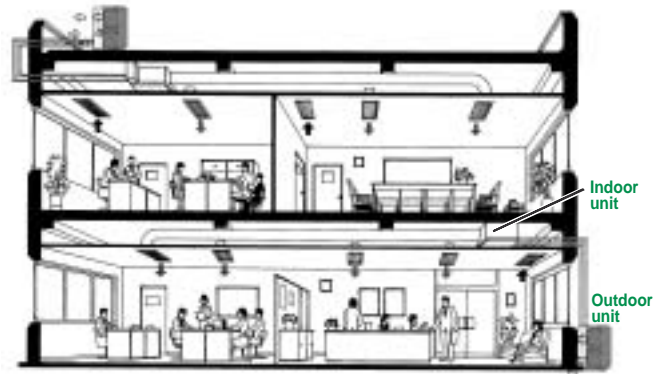
[FEATURES]

Wide range of capacities (5HP-20HP)

Flexible duct design by using high static pressure specifications (150Pa option)



PE-GAK



Highly-functional remote controller

Weekly timer and Multi-language display enables Comfort control and Ease of Use.



PU-YJSA
PU-YAKD



PAR-21MAA



SPECIFICATIONS

(50Hz)

Model name		PE-5GAK	PE-6GAK	PE-8GAK	PE-10GAK	PE-12GAK	PE-16GAK	PE-20GAK		
Power source		1N- 220/230/240V 50Hz			3N- 380/400/415V 50Hz					
Cooling *2	Capacity	kW	12.1	15.7	21.6	26.7	30.8	43.2	53.4	
		kcal/h	10,400	13,400	18,500	22,900	26,400	37,100	45,900	
		Btu/h	41,000	54,000	74,000	91,000	105,000	147,000	182,000	
	Sensible Capacity	kW	9.9	12.9	16.0	20.0	22.8	29.8	36.8	
		kcal/h	8,500	11,000	13,700	17,200	19,500	25,600	31,600	
		Btu/h	34,000	44,000	55,000	68,000	78,000	102,000	126,000	
Power input	kW	0.87		1.00	1.12 (-SP 1.18)	1.22	1.55	2.84		
Current input	A	4.0		1.8 (-SP 2.0)	2.0 (-SP 2.3)	2.3	3.8	5.4		
Temperature range of cooling	Indoor	W.B.	15.5°CWB-22.5°CWB			15°CWB-24°CWB				
	Outdoor	D.B	(21)-46°CDB			(20)-52°CDB ((20)-43°CDB with PAC-SG208SG-E)				
Capacity control		0/100								
Fan	Type x Quantity	Sirocco fan x 1 (-MF Metal fan)			Sirocco fan x 2 (-MF Metal fan)		Sirocco fan x 2 (Metal fan)			
	Air flow rate (Hi-Lo)	CMM	50-40	55-44	65-52	80-64	90-72	120	160	
	External static pressure	Pa	100 (-SP 150)				100	150	150	
	Motor output	kW	0.46 (-SP 0.54)		0.75 (-SP 0.77)		0.77	1.3	1.8	
External finish		Galvanized steel								
External dimension	H x W x D	mm	400 x 1,180 x 634		400 x 1,400 x 634	400 x 1,600 x 634		595 x 1,947 x 764		
Heat exchanger type		Cross fin								
Air filter		Option								
Refrigerant piping diameter Liquid / Gas		mm	ø9.52 / ø19.05		ø15.88 / ø25.4	ø15.88 / ø28.6		ø15.88 / ø25.4 x 2	ø15.88 / ø28.6 x 2	
Drain piping dimension		mm	25.4 (R1)							
Noise level *3		dB(A)	46-42 (-SP 48-45)		49-45 (-SP 51-48)		50-46 (-SP 52-49)	51-48	52	53
Net weight		kg	56	59	70	77	77	130	133	
Remote controller		PAR-21MAA (attached)								
Model name		PU-5YJSA	PU-6YJSA	PU-8YAKD	PU-10YAKD	PU-12YAKD	PU-8YAKD x 2	PU-10YAKD x 2		
Power source		3N- 380/400/415V 50Hz								
Cooling *1	Power input	kW	4.82	5.35	6.65	9.13	10.15	6.65 x 2	9.13 x 2	
	Current input	A	8.2	9.1	13.0	16.6	17.9	13.0 x 2	16.6 x 2	
	Starting current(50Hz)	A	66	74	95.0	125.0	118.0	108	141.6	
Refrigerant	Type	R22								
	Original charge	kg	5.1	5.7	6	6.5	7	6 x 2	6.5 x 2	
Refrigerant control		Capillary								
Fan	Type x Quantity	Propeller fan x 2					(Propeller fan x 2) x 2			
	Air flow rate	CMM	100			160		160 x 2		
	Motor output	kW	0.1 x 2			0.15 x 2		(0.15 x 2) x 2		
Compressor	Type	Hermetically closed scroll								
	Motor output	kW	3.5	4.2	5.6	7.5	8.6	5.6 x 2	7.5 x 2	
	Lubricant	SONTEX 200LT								
	Crankcase heater	kW	-					0.09		0.09 x 2
External finish		Polyester resin coating								
Color		Munsell 3Y7.8/1.1								
External dimension	H x W x D	mm	1,258 x 970 x 345 + 24			1,480 x 1,047 x 547		(1,480 x 1,047 x 547) x 2		
Heat exchanger type		Cross fin								
Refrigerant piping diameter Liquid / Gas		mm	ø9.52 / ø19.05		ø15.88 / ø25.4	ø15.88 / ø28.6		ø15.88 / ø25.4 x 2	ø15.88 / ø28.6 x 2	
Noise level *4	Cooling	dB(A)	55	56	66					
Net weight		kg	114	117	197	206	208	197 x 2	206 x 2	
Protection devices		High pressure / Thermal switch Thermal relay / Anti phase Internal inherent motor protection			High pressure / Low pressure / OCR Internal inherent motor protection of COMP / Internal inherent motor protection					

Note 1. Nominal cooling conditions
Indoor: 27°CDB/19°CWB
Outdoor: 35°CDB
Pipe length: 5m(5.6HP) , 7.5m(8-20HP)
2. Cooling capacity is gross capacity which do not include a deduction for evaporator fan motor heat.
3. Measured at 1.5m from the unit's bottom in an anechoic room.
4. Measured at 1m from the unit in an anechoic room.

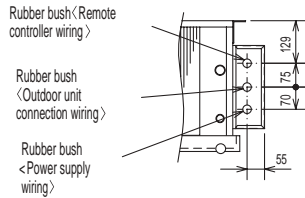
Optional parts

Item	Special model	Optional part	Applicable model
High-static motor	-SP model		PE-5/6/8/10GAK
Metal fan	-MF model		PE-5/6/8/10/12GAK
Anti-corrosion fin	-BS model		PU-8/10/12YAKD
Air filter		PAC-KE206AF	PE-5/6GAK
		PAC-KE208AF	PE-8GAK
		PAC-KE210AF	PE-10/12GAK
		PAC-KE220AF	PE-16/20GAK
		PAC-SK209PG-E	PU-8/10/12YAKD
Pressure gauge		PAC-292SG-D	PU-5/6YJSA
Air outlet guide		PAC-SG208SG-E	PU-8/10/12YAKD
Air outlet guide (2pcs/pack)		MAC-399IF-E	PE-5/6/8/10/12/16/20GAK
M-NET interface		PAC-SA47DS-E	PU-5/6YJSA
Drain socket			

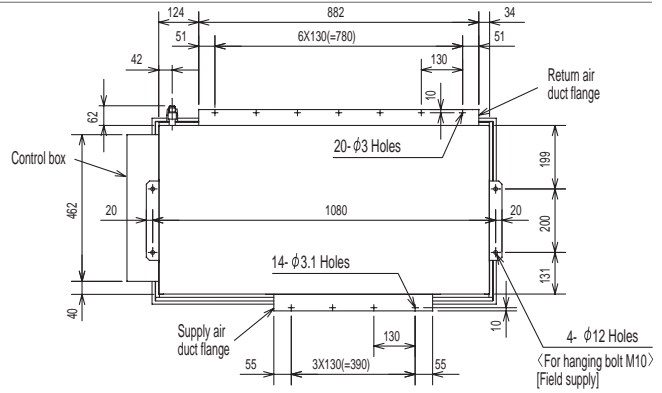
OUTLINE DIMENSIONS

PE-5,6

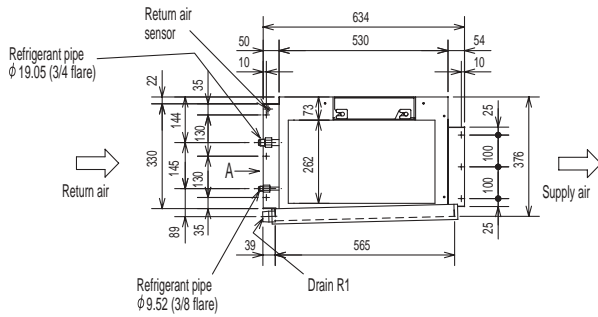
- <Accessory>
 • Pipe cover 2pcs.
 (For dew condensation prevention of local piping and unit connection.)
 • Remote controller 1pc.



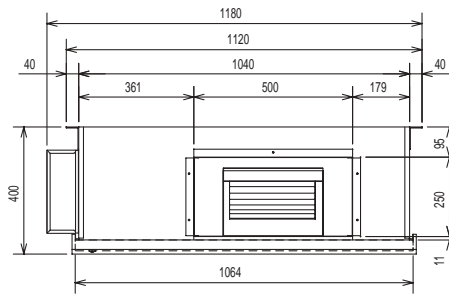
A



Top view



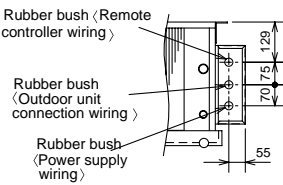
Left side view



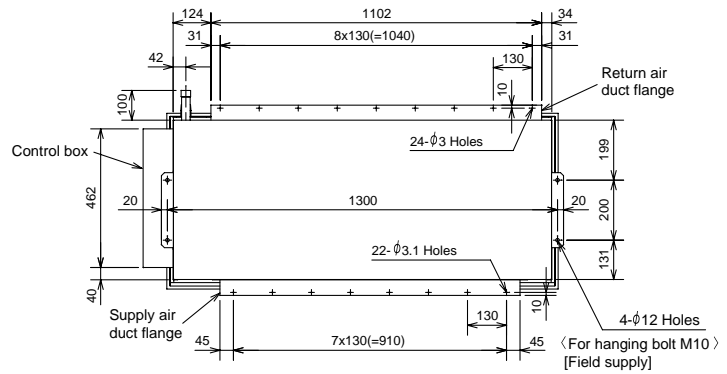
Front view

PE-8

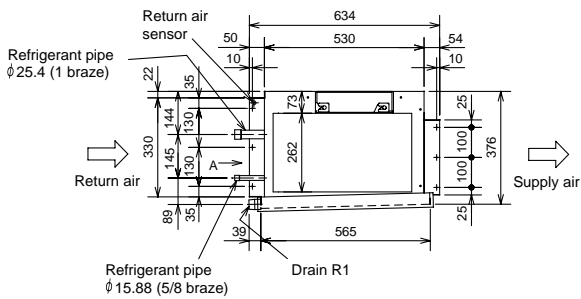
- <Accessory>
 • Pipe cover 2pcs.
 (For dew condensation prevention of local piping and unit connection.)
 • Remote controller 1pc.



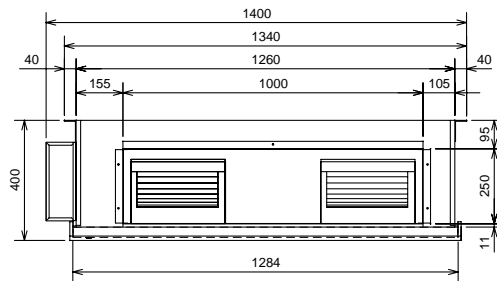
A



Top view



Left side view



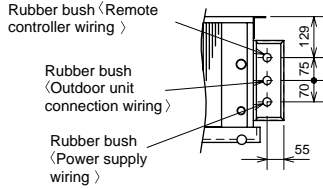
Front view

OUTLINE DIMENSIONS

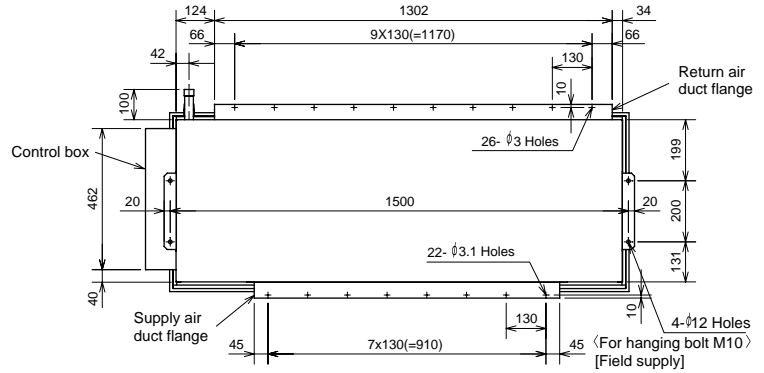
PE-10,12

<Accessory>

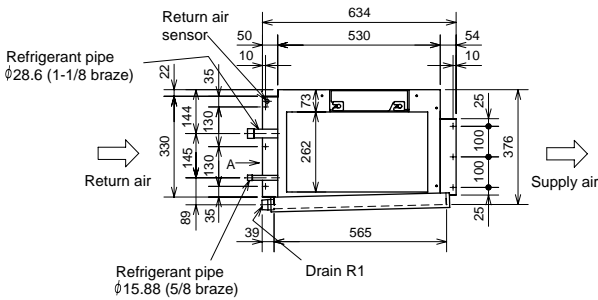
- Pipe cover2pcs.
(For dew condensation prevention of local piping and unit connection.)
- Remote controller.....1pc.



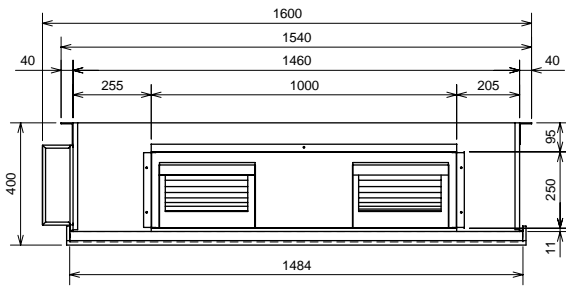
A



Top view



Left side view

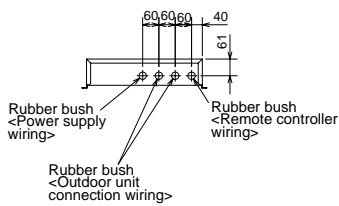


Front view

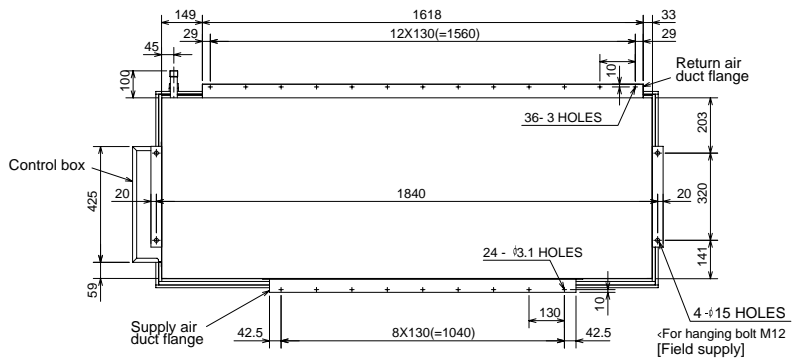
PE-16,20

<Accessory>

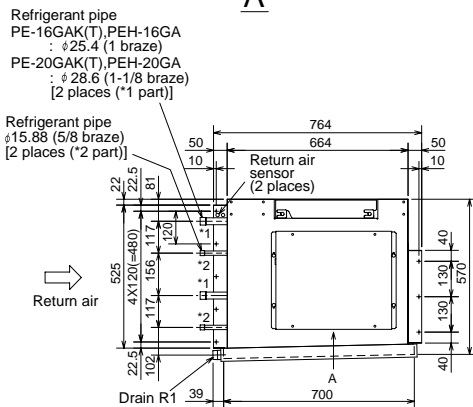
- Pipe cover4pcs.
(For dew condensation prevention of local piping and unit connection.)
- Remote controller1pc.



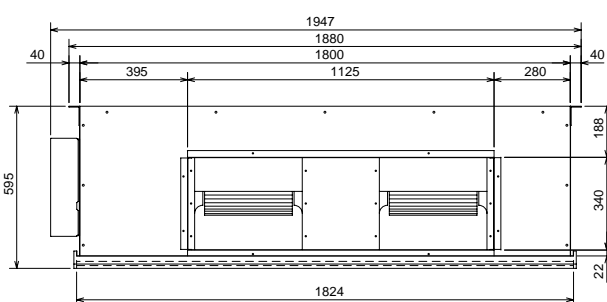
A



Top view



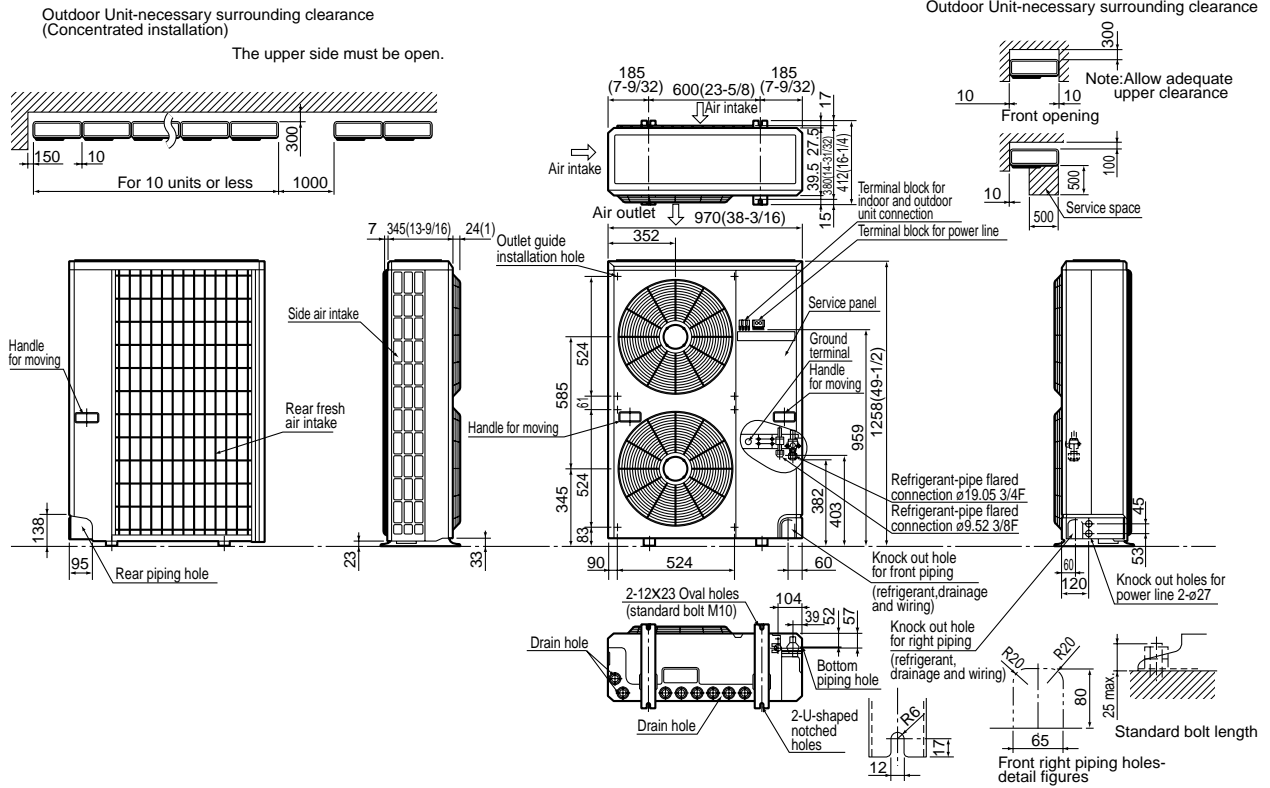
Left side view



Front view

OUTLINE DIMENSIONS

PU-5,6



PU-8,10,12

- <Accessory>
 -Conduit mounting plate
 (Painted the same color as the unit body)
 a) $\phi 27$1pc.
 b) $\phi 34$1pc.
 -Tapping screw 4512.....4pcs.
 -Connection pipe.....1pc.
 -Packing.....1pc

Note 1. It is possible to change to $\phi 27$ or $\phi 34$ by selecting the conduit mounting plate a, b.

