

Air Conditioning

Product Information

PLA-RP35BA (Single Phase)
Standard Inverter Heat Pump
4-Way Blow Ceiling Cassette System

Making a
World of
Difference

Mr.SLIM™



Our Standard Inverter range offers customers all the features and benefits of inverter technology whilst being cost effective.

Key Features

- Airflow controllable for ceiling heights up to 3.5m, with automatic adjustment of fan speed
- Reduced draft air distribution, with independent vane control
- Filter lowering operation down to 4m (optional PLP-6BAJ grille required)
- Optional 'i-see sensor' for energy saving and smooth temperature control throughout the room



Air Conditioning | Heating
Ventilation | Controls



Air Conditioning

Product Information

PLA-RP35BA (Single Phase)
Standard Inverter Heat Pump
4-Way Blow Ceiling Cassette System

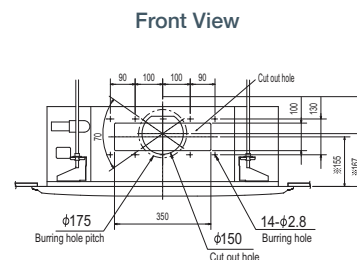
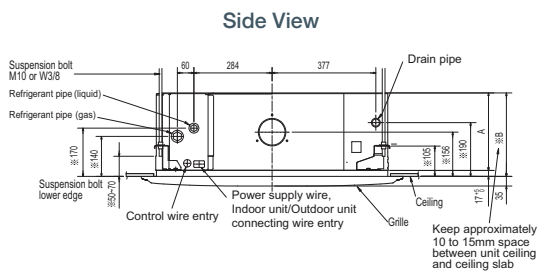
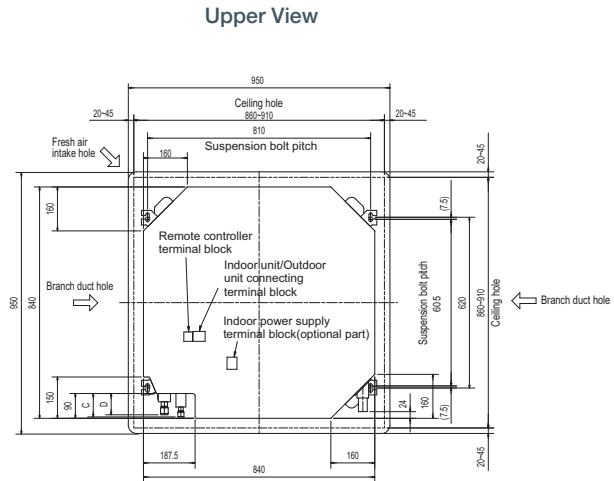
Making a
 World of
 Difference

PLA-RP - INDOOR UNITS		PLA-RP35BA
CAPACITY (kW)	Heating (nominal)	4.1 (1.7-5.0)
	Cooling (nominal)	3.6 (1.4-3.9)
	Heating (UK)	3.49 (1.45-4.25)
	Cooling (UK)	3.31 (1.29-3.59)
SHF (nominal & UK)		0.84
COP / EER (nominal)		3.94 / 3.30
SCOP / SEER (BS EN14825)		4.2 / 6.0
EP ENERGY EFFICIENCY CLASS	Heating/Cooling	A+ / A+
AIRFLOW (l/s)	Lo-Mi-Mi2-Hi	183-200-217-250
PIPE SIZE mm (in)	Gas/Liquid	9.52 (3/8") / 6.35 (1/4")
SOUND PRESSURE LEVEL (dBA)	Lo-Mi-Mi2-Hi	27-28-29-31
SOUND POWER LEVEL (dBA)		54
DIMENSIONS (mm)	Width x Depth x Height (Grille)	840 (950) x 840 (950) x 258 (35)
WEIGHT (kg)	Unit / Panel	22 / 6
ELECTRICAL SUPPLY		Fed by Outdoor Unit
FUSE RATING (BS88) - HRC (A)		6
INTERCONNECTING CABLE No. Cores		4
GRILLE REFERENCE		PLP-6BA
WIRED REMOTE CONTROLLER REFERENCE		PAR-31MAA

SUZ-KA - OUTDOOR UNITS		SUZ-KA35VA4
SOUND PRESSURE LEVEL (dBA)	Heating/Cooling	50 / 49
SOUND POWER LEVEL (dBA)	Cooling	62
WEIGHT (kg)		35
DIMENSIONS (mm)	Width x Depth x Height	800 x 285 x 550
ELECTRICAL SUPPLY		220-240v, 50Hz
PHASE		Single
SYSTEM POWER	Heating/Cooling (nominal)	1.04 / 1.09
INPUT (kW)	Heating/Cooling (UK)	0.93 / 0.93
STARTING CURRENT (A)		5.0
SYSTEM RUNNING CURRENT (A)	Heating/Cooling [MAX]	5.00 / 5.00 [8.4]
FUSE RATING (BS88) - HRC (A)		10
MAINS CABLE No. Cores		3
MAX PIPE LENGTH (m)		20
MAX HEIGHT DIFFERENCE (m)		12
CHARGE R410A (kg)		1.15

Notes: Indoor price includes separate PLP-6BA grille and PAR-31MAA wired remote controller. No duty/standby operation on SUZ-KA35/50/60/71VA4.

DIMENSIONS



Model	A	B	C	D	E
PLA-RP35BA	241	258	80	74	400



Telephone: 01707 282880

email: air.conditioning@meuk.mee.com web: www.airconditioning.mitsubishielectric.co.uk

UNITED KINGDOM Mitsubishi Electric Europe Living Environmental Systems Division
 Travellers Lane, Hatfield, Hertfordshire, AL10 8XB, England General Enquiries Telephone: 01707 282880 Fax: 01707 278881

IRELAND Mitsubishi Electric Europe Westgate Business Park, Ballymount, Dublin 24, Ireland
 Telephone: Dublin (01) 419 8800 Fax: Dublin (01) 419 8890 International code: (003531)

Country of origin: United Kingdom - Japan - Thailand - Malaysia. ©Mitsubishi Electric Europe 2015. Mitsubishi and Mitsubishi Electric are trademarks of Mitsubishi Electric Europe B.V. The company reserves the right to make any variation in technical specification to the equipment described, or to withdraw or replace products without prior notification or public announcement. Mitsubishi Electric is constantly developing and improving its products. All descriptions, illustrations, drawings and specifications in this publication present only general particulars and shall not form part of any contract. All goods are supplied subject to the Company's General Conditions of Sale, a copy of which is available on request. Third-party product and brand names may be trademarks or registered trademarks of their respective owners.



Note: The fuse rating is for guidance only. Please refer to the relevant databook for detailed specification. It is the responsibility of a qualified electrician/electrical engineer to select the correct cable size and fuse rating based on current regulation and site specific conditions. Mitsubishi Electric's air conditioning and heat pump systems contain fluorinated greenhouse gases R410A, R407C and R134a.



www.greengateway.mitsubishielectric.co.uk

Mitsubishi Electric UK's commitment to the environment



Follow us @meuk_Jes
 Follow us @green_gateway



Mitsubishi Electric
 Living Environmental Systems UK



mitsubishielectric2

Effective as of April 2015